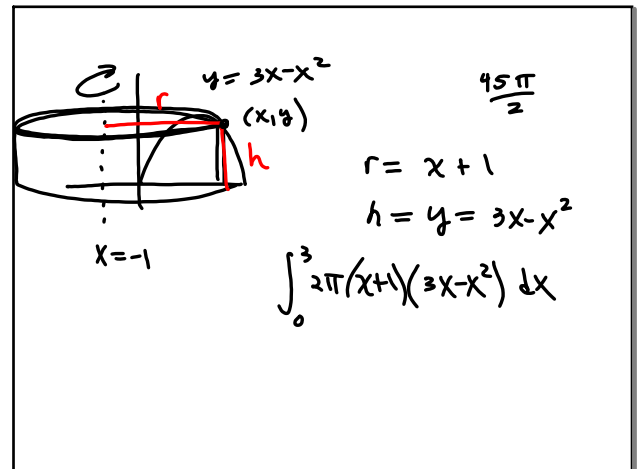
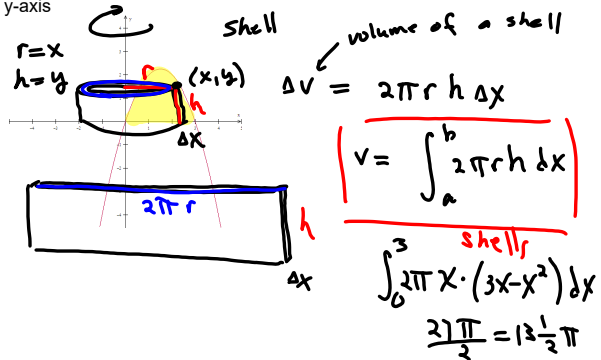


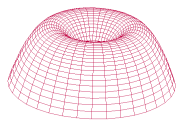
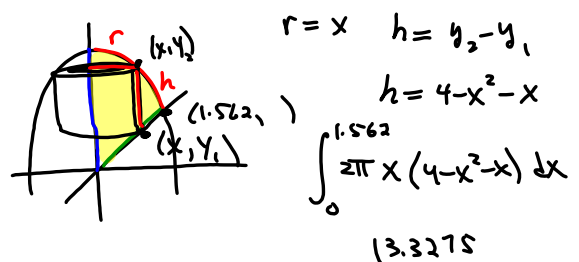
7.3b Volumes

cylindrical shells

Revolve the region bounded by $y=3x-x^2$ and the x-axis about the y-axis

Dec 8-9:34 AM

Find the volume using the shell method

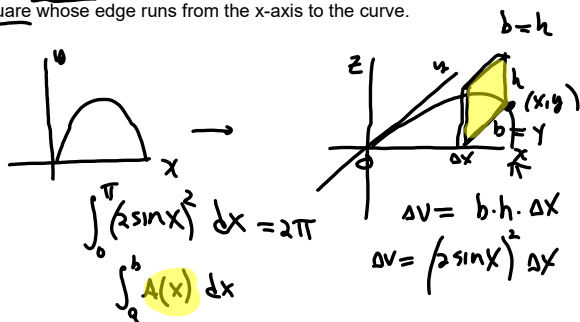
The region bounded by the curves $y=4-x^2$, $y=x$ and $x=0$ is revolved about the y-axis to form a solid. Use shells to find the volume of the solid.

Dec 16-9:13 PM

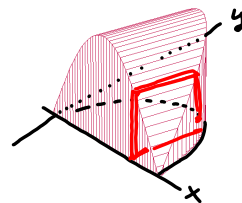
Dec 16-9:26 PM

Other cross sections

The base of a solid is the region between the x-axis and one arch of the curve $y=2\sin(x)$. Each cross section cut perpendicular to the x-axis is a square whose edge runs from the x-axis to the curve.



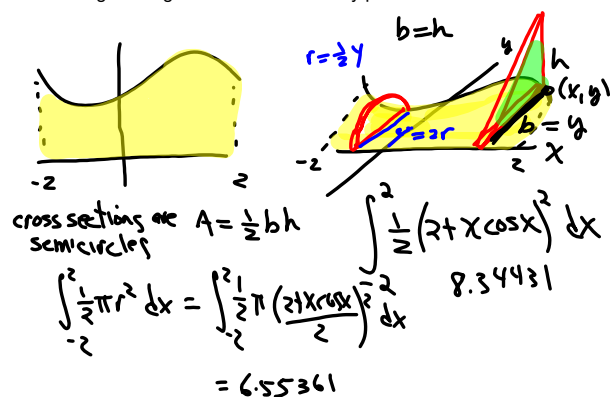
Find the volume



Dec 16-9:28 PM

Dec 16-9:48 PM

The base of a solid lies between $y=2+x\cos(x)$ and the x-axis from $x=-2$ to $x=2$. The cross sections perpendicular to the x-axis are isosceles right triangles with base on the xy plane. Find the volume.



Dec 16-9:49 PM